



MMS MAGAZINE

CELEBRATING A LEGACY OF MARITIME EXCELLENCE WITH THE PANAMA CANAL

PAGES 3

LIFTING CARGO TANKS FOR LOW TEMPERATURE (LT)

PAGE 4-6

REVAMPING THE MAIN DECK OF A PANAMAX TANKER

PAGES 10 - 11



TABLE OF CONTENTS

- 2 Talleres Industriales: Sponsor Of Colon Baseball Team
- 3 Celebrating a Legacy of Maritime Excellence with the Panama Canal.
- 4 HULLWIPER AD
- 5 Lifting Cargo Tanks for Low Temperature (LT) Plates Renewal on an LPG Panamax Vessel
- 8 Committed to Customer Satisfaction
- 9 Load Test
- 10 Revamping The Main Deck Of A Panamax Tanker
- 12 Ensuring Maritime Excellence: Talleres Industriales' Marine Elevator Service Division
- 14 ADERCO AD
- 15 Rapid Response: Talleres Industriales' Emergency Clean-Up During New Year's Festivities
- 16 Talleres Out Of The Box

**TALLERES INDUSTRIALES:
SPONSOR OF COLON BASEBALL TEAM**



This summer, we took our community engagement a step further by sponsoring our local baseball team across various age categories. Our involvement with the team goes beyond financial support; we engage with the players, emphasizing the importance of values and ethics in both sports and everyday life.

In a particularly impactful session, we invited the players to articulate the values they believe represent their team. This exercise wasn't just about identifying values but about instilling a sense of responsibility and understanding that these values represent a commitment to their conduct on and off the field.

Education and sports are crucial in nurturing young talents, providing them with opportunities for growth and development. By supporting the baseball team, Talleres Industriales not only contributes to the sporting community but also reinforces the importance of discipline, teamwork, and integrity among the youth.

Talleres Industriales, S.A.
Av. Central Cl. 16, Colón, Panamá.
+(507)4339500
talleres@talleresindustriales.com



TALLERES INDUSTRIALES: CELEBRATING A LEGACY OF MARITIME EXCELLENCE WITH THE PANAMA CANAL



Talleres Industriales has shared a long and fruitful history with the Panama Canal, a relationship that dates back to the company's inception. Founded in 1969, Talleres Industriales quickly distinguished itself as the first private ship repair facility operating for Panama Canal users. For over half a century, this relationship has been crucial in maintaining the flow of maritime traffic through one of the world's most vital waterways.

Talleres Industriales has played a crucial role in performing repairs on vessels arriving at Balboa and Cristobal anchorages in Panama. The company services not only ships that utilize their waiting time for maintenance but also addresses urgent issues such as engine and structural failures, or missing mooring equipment, thereby preventing transit delays.

Additionally, Talleres Industriales' participation as a local subcontractor in the construction of the canal's third set of locks highlights its key role in enhancing the capacity and efficiency of the canal. This involvement was part of a major international collaboration with main contractors from Spain, Italy, and Belgium, underscoring the company's significant contribution to this critical infrastructure project.

Talleres Industriales is not just a service provider but also one of the canal's significant local clients, with its fleet of over 20 vessels, including workboats, supply boats, and barges, frequently navigating the waterway.

As a Panamanian company, Talleres Industriales prides itself on upholding the canal's legacy as a marvel of modern engineering and a critical asset to the global maritime community.



A SPLASH OF INNOVATION BELOW THE SURFACE

Beneath the surface, HullWiper is leading the way in ship hull cleaning with precision and care. Our eco-friendly Remotely Operated Technology (ROV) works quickly and safely to remove marine fouling, protecting your vessel's performance while safeguarding the marine environment.

No divers, no damage, no downtime. Just cleaner hulls, reduced fuel costs and a green step towards sustainable operations.

Supports significant savings on fuel consumption of up to 40%



Operates day or night and during fuel or cargo operations

Explore the smarter way to maintain your vessel.

www.hullwiper.co | www.talleresindustriales.com



LIFTING CARGO TANKS FOR LOW TEMPERATURE (LT) PLATES RENEWAL ON AN LPG PANAMAX VESSEL



Our client from Asia reached out to Talleres Industriales with an issue involving their LPG vessel in route to Panama. The cargo hold no. 1's low-temperature double bottom plating had fractures, and many wooden blocks had shifted due to water infiltration.



Talleres was tasked with lifting the cargo tank to install over 30 new wooden blocks, which were imported from overseas.



The lifting was performed using an innovative approach involving heavy-duty lifting bags, while the tanks were cleaned, ventilated, and illuminated for the procedure.



Inside Double Bottom Tank No. 1, over 300 stiffeners were installed, welded, and painted to reinforce the area according to the vessel manufacturer's specifications.



The LPG cargo hold tank's base was inspected by a CHOCKFAST-certified technician, and IACS-approved technicians conducted several testing procedures, including Shear Wave Ultrasonic, Vacuum Box, Liquid Penetrant, and PHASED ARRAY testing on the affected areas.



Once the scope of work was defined with the classification society, Talleres supplied all the necessary resources and facilities to support class-approved LT welders in renewing three inserts in the affected areas.



We are proud to have completed this project with the highest safety standards, coordinating with a marine chemist.



The work was tested by our NDT team, and the job was completed in collaboration with international contractors, receiving approval from both the class and the vessel owners.



COMMITTED TO CUSTOMER SATISFACTION

TALLERES INDUSTRIALES, S.A.
 Doc. N° TISA-21-000
 Doc. Type: Checklist / template
 Page: 1 of 1

DEPARTMENT: _____

Customer Feedback

Rev. Date: 09.26.2021
 Rev. No.: 1

Customer: _____
 Vessel: _____
 Job #: _____
 Type of Service: _____

As part of our ISO Quality System, we are always looking to exceed our customer expectations, pleased filled this form upon completion of jobs or send by e-mail, to calidadtotal@talleresindustriales.com
 Please pick the box that suits your experience and reply best. **Nº 00334**

No.	Questions:	Excellent	Very Good	Good	Not so Good	Poor
1.	What is your opinion about our arrival time, punctuality onboard your vessel?	✓				
2.	What is your opinion about our performance and planning onboard?	✓				
3.	What is your opinion about the technical capability of our supervisor and labor onboard?	✓				
4.	What is your opinion about the safety commitment of our personnel?	✓				
5.	What is your opinion about the accuracy of our documentations and reports?	✓				
6.	What is your opinion about the communication skills of our supervisor onboard?	✓				
7.	Did the services provided meet your requirements and expectations?	✓				
8.	What is your overall opinion of Talleres Industriales services?	✓				

Comments:
 The welding of 369 supports for #1 WER sub Reinforcement work done with good planning and coordination with welders /WHI team. Job carried out with good safety standards. Mr Raza Pinto /MR Abel Adams support is very important to mention here for safe completion, including Cargo & lifting works. I thank Talleres for this extraordinary work @ off shore and expect the same support in future endeavours.

Technician Signature _____ Date _____
 Reviewers Signature _____ Date _____



At Talleres Industriales, S.A., customer satisfaction is our top priority. We take pride in delivering high-quality, reliable, and efficient solutions for every project.

Our clients' trust drives us to continuously improve and innovate in the maritime industry. Their feedback is key to our success, ensuring we meet the highest standards in every operation.

Thank you for choosing us as your trusted partner!



TALLERES INDUSTRIALES, S.A.

24/7 SHIP REPAIRS AND MARINE SOLUTIONS



PRESENTS

LOAD TEST

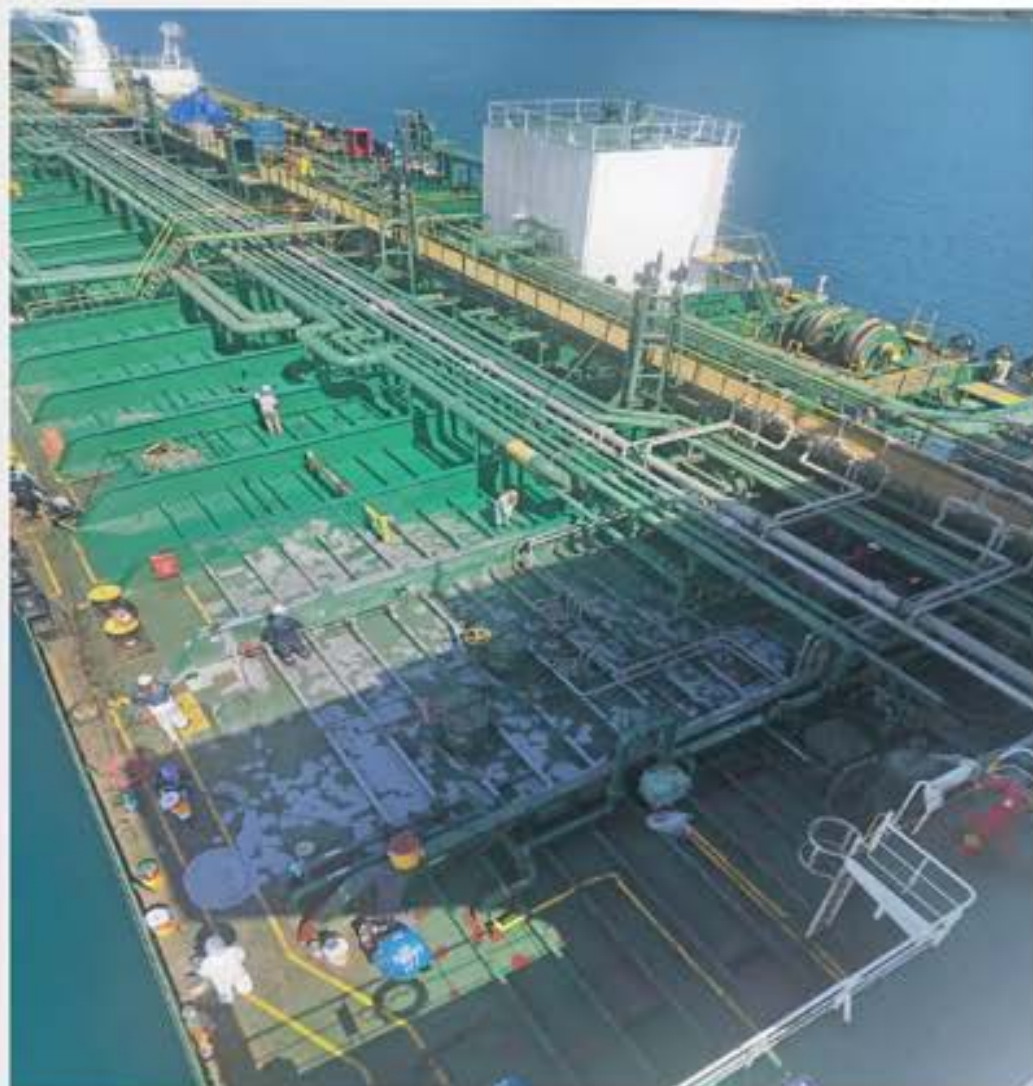
All tests can be performed while the vessels are afloat!



REVAMPING THE MAIN DECK OF A PANAMAX TANKER



In the maritime lanes of the Panama Canal, where time is always critical, Talleres Industriales has turned waiting time into an opportunity for vital maintenance.



A recent project at Balboa showcased this approach when a Panamax tanker, awaiting transit, needed a facelift on its main deck.

Seizing the moment, Talleres deployed a specialized team equipped with eco-friendly water blasting technology, performing the work directly at the vessel's location.



Water blasting technology was used to remove old paint and corrosion without the harmful dust of traditional sandblasting. This method not only ensures no environmental impact but also delivers superior surface preparation for painting.



The result was an impressive transformation that met both the vessel's specifications and the master's expectations.



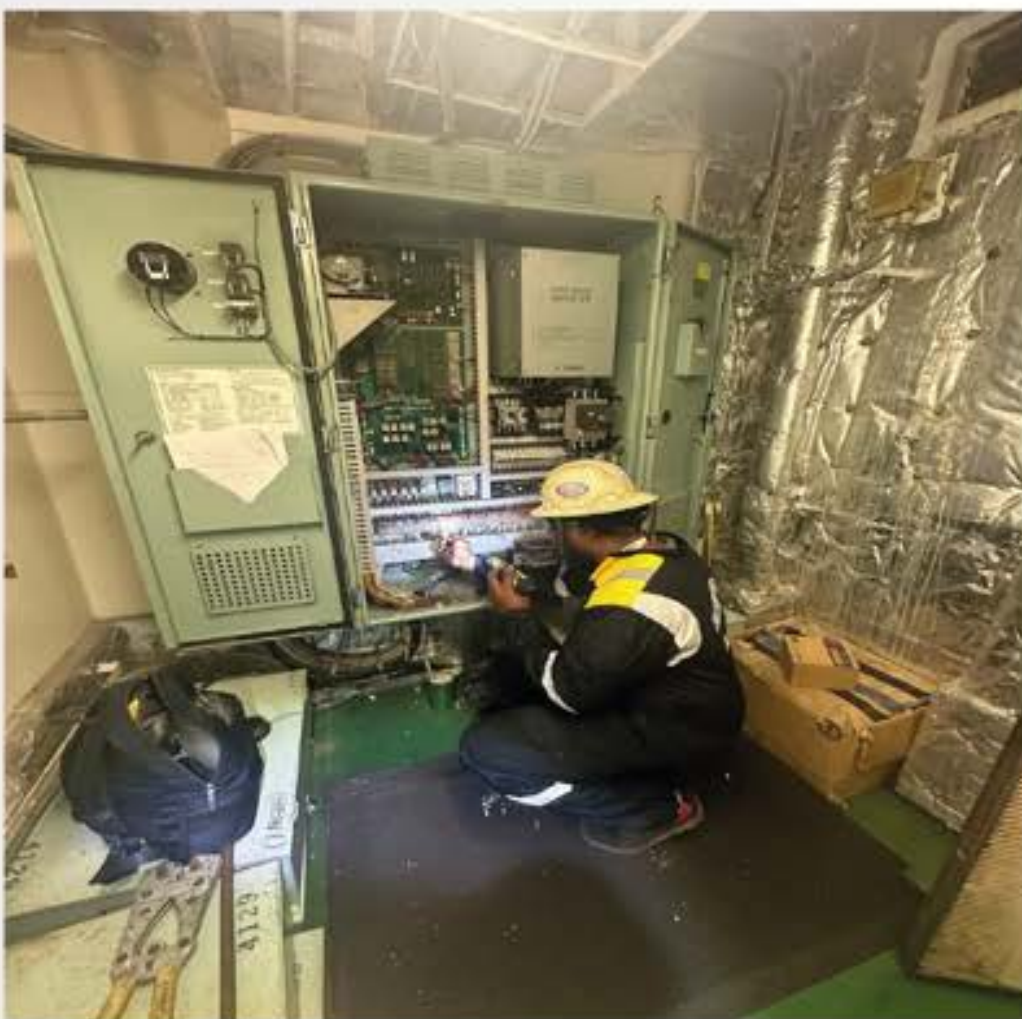
This innovative project demonstrates Talleres Industriales' commitment to quality, efficiency, and sustainability. By turning downtime into a productive pit stop, the company leads the industry in using creative, eco-friendly solutions to optimize vessel maintenance during potential delays.

Ensuring Maritime Excellence: Talleres Industriales' Marine Elevator Service Division



At Talleres Industriales, our commitment to filling the service gaps for vessels transiting the Panama Canal is exemplified by our long-standing Marine Elevator Service Division.

Recognizing the need for specialized care in marine elevators, we pioneered these services many years ago, ensuring every vessel's operational integrity while in transit. As an authorized service supplier for Hyundai, the world's leading elevator manufacturer, our skilled engineers are backed by the best in the industry. This collaboration not only enhances our expertise but also reinforces our capability to meet strict safety and efficiency standards, providing comprehensive annual inspections and maintenance.



Our engineers are on call 24/7, ready to respond to both planned maintenance and unexpected repairs across Panama and neighboring countries. This readiness and dedication reflect our overarching mission: to serve the maritime community's needs promptly and proficiently.



WHERE SUSTAINABILITY MEETS PERFORMANCE.

Unleash the Power of Innovation for Cleaner, Greener, and Efficient Solutions



Want to see how much you could save?
Try our Savings Simulator today!

Aderco
Simulators

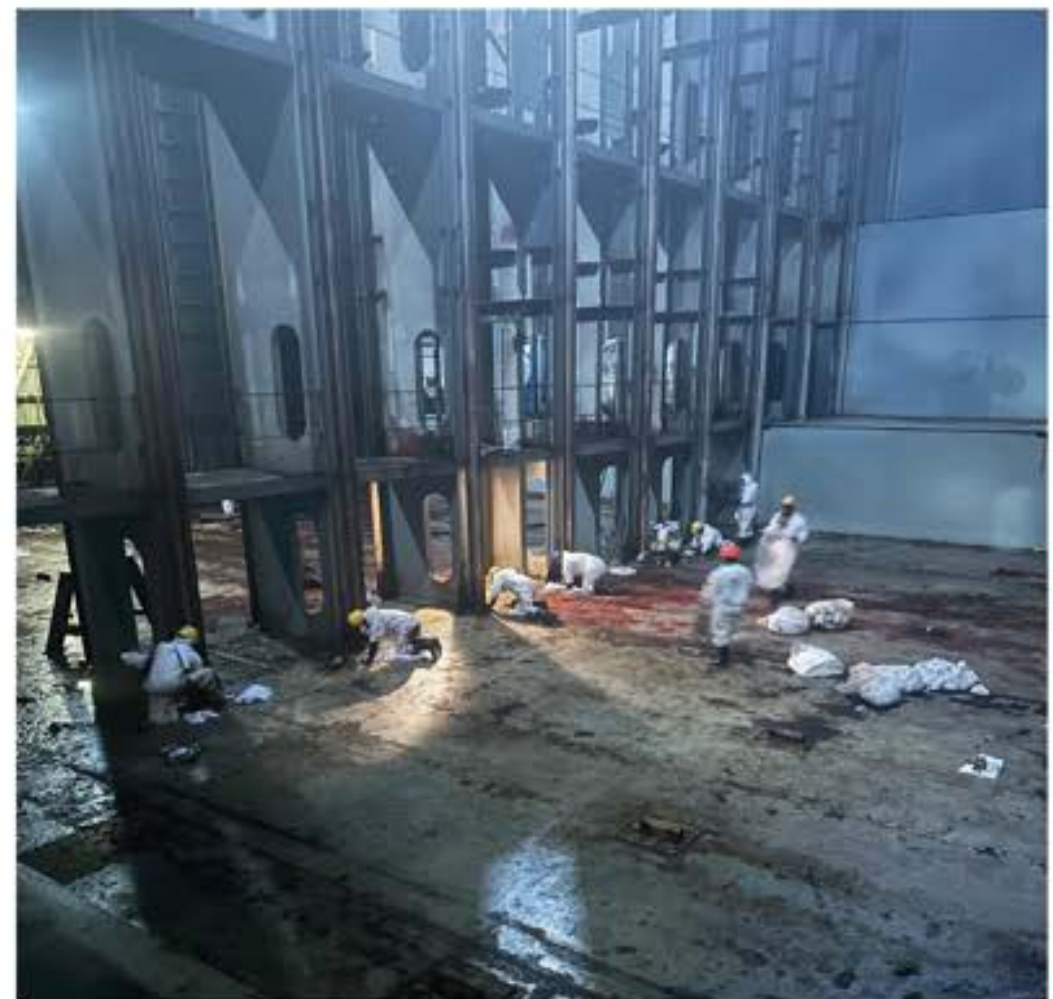


aderco.com

RAPID RESPONSE: TALLERES INDUSTRIALES' EMERGENCY CLEAN-UP DURING NEW YEAR'S FESTIVITIES

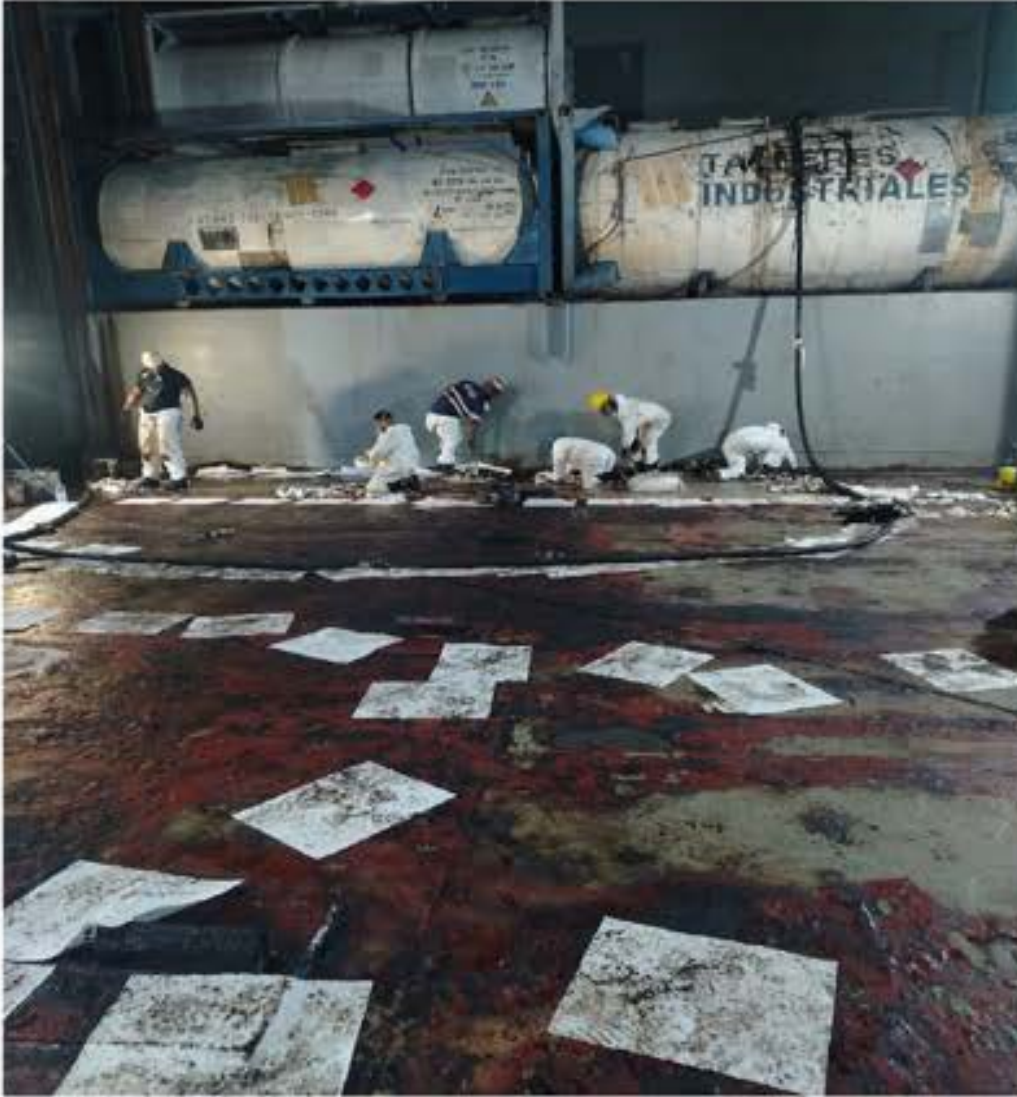


During the New Year's festivities, Talleres Industriales demonstrated its commitment to excellence and rapid response in the face of a maritime emergency.



A severe incident involving a broken pipe resulted in a significant fuel oil spill within the cargo hold of a container vessel, necessitating an immediate and robust clean-up operation.

More than 100 of our skilled personnel were mobilized, working tirelessly in two shifts around the clock to manage the spill efficiently.



Our team employed high-pressure washes, specialized pumps, and gears, alongside tank containers, to meticulously collect and transfer the recovered pollutants to tank trucks onshore.

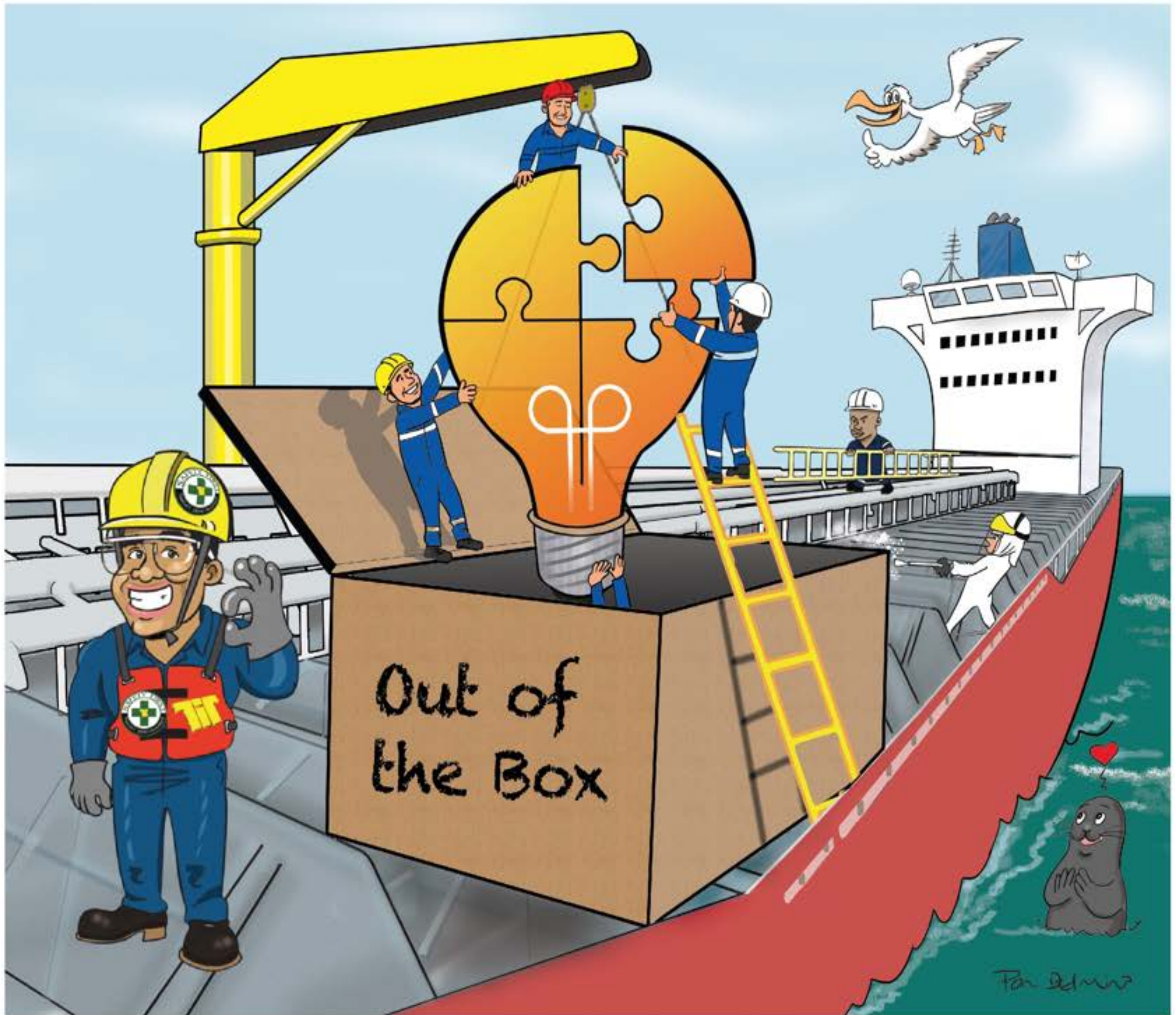


Safety was paramount throughout this operation, as the physical demands on our team were immense, with continuous entry and exit from the hold under challenging conditions.



This effort not only underscores our capability as a non-stop 24/7 service provider but also highlights our team's dedication and professionalism. At Talleres Industriales, we are immensely proud of our people and their passion for their mission, which is a testament to what we represent to the global shipping community—fast, committed, and professional responses in times of critical need.





WE OFFER GREAT IDEAS FOR
CHALLENGING JOBS!

MS MAGAZINE



talleresindustriales -shiprepairs



@talleres_industriales



talleres industriales

www.talleresindustriales.com