



MS
MAGAZINE

**INSTALLATION OF CRANE
SLEWING TOWER AND JIB
AFTER RENEWAL OF
BEARING
PAGES 4 - 6**



**TALLERES PREMIERE!
OUTSTANDING PEOPLE
PAGES 11 - 12**

**ANCHOR CHAIN CLASS
APPROVED STUD LINK REPAIRS
PAGES 15**



TABLE OF CONTENTS

- 2 We have Fun While Doing our Job!
- 3 **Editorial** - The Family Within the Family
- 4 Installation of crane slewing tower and jib after renewal of bearing
- 7 **ROV** Hull Cleaning Technology
- 8 Big Challenges
- 9 Lifeboat Repairs & Inspections
- 10 Rental of Power Pack
- 11 Talleres Premiere! Outstanding People
- 13 New CNC Brake Machine
- 14 Load Test
- 15 Anchor Chain Class Approved Stud Link Repairs
- 16 Safety First

Talleres Industriales, S.A.
 Av. Central Cl. 16, Colón, Panamá.
 +(507)4339500
 talleres@talleresindustriales.com

WE HAVE FUN WHILE DOING OUR JOB!



Fun at work matters. Having Fun means high productivity and a healthy ecosystem. Fun at Talleres Industriales encourages communication and collaboration and of course lowers the stress levels. Having an environment of daily challenges and with a high degree of responsibility can make your heartbeat go faster and your imagination go wild, so at least, let's have fun during the process.

Fun at Talleres is a key element of employee retention and engagement. We are always on a harsh environment far from shore, against the clock, and under pressure from stakeholders. Therefore, we must compensate the challenges with by good vibes and celebrate our achievements which has a positive impact to the world.

Furthermore, passion and a sense of belongingness are aligned with fun which helps our team to have a more positive mind-set, enjoy the daily adrenaline but at the same time, balance our mental health from the pressure of our clients. Our invitation to the Talleres team is: Whatever you do in your daily routine, please, please "have fun."



THE FAMILY WITHIN THE FAMILY



Talleres has 54 years in business and nowadays has a 3rd generation member active in the company. It has been a long road full of excitement, challenges, pitfalls, and complex situations.

Doing our job without mixing our roles, as an employee and as a family member is the key of keeping the company running and healthy. The first big step and responsibility for the family is to accept that the most important family to take care of is Talleres. Our employees who work hard to keep the company running along with their families are the backbone of Talleres.

In Talleres, we always find special occasions to share our success with our employees, their families, and the industry. We are proud to still be in the market as a Family company after 54 years and we look forward to reach to 100 years serving our country and the world.



INSTALLATION OF CRANE SLEWING TOWER AND JIB AFTER RENEWAL OF BEARING



Replacing a crane's slewing bearing involves removing the old bearing and fitting a new one via hydraulic jacks.





This process requires careful planning, specialized equipment, and highly skilled engineers.



The new bearing must be compatible with the crane's design specifications and be installed accurately to ensure smooth operation.



The installation of a crane tower and jib involves several steps, including attaching the tower to the bottom plate, installing, and tightening the bolts to the adequate torque.



In the same way, involves attaching the jib to the crane, securing it in place with bolts and nuts, and testing the functionality of the jib to ensure it can safely operate with the crane. Installation should always be done by skilled and experienced technicians, who can follow manufacturer's instructions and safety guidelines to ensure successful installation and avoid accidents or damage to equipment or property.



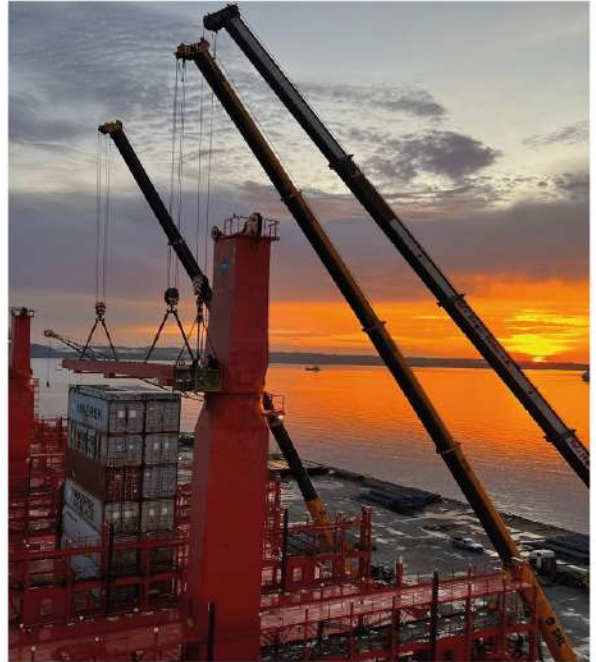
On this project, TISA oversaw the repairs, the logistics, and the installation of the crane slewing tower, the jib, and the hoisting and luffing cables. We first landed the jib which was sent on another vessel and kept it in our workshop until the ship called Panama. Once at berth, we started by untightening the bolts with a special high-pressure air pump, then with help of the gantry crane, the 44-ton tower was lowered. Using an additional shore crane, we were able to rotate the tower and then transport it to our working area.



Once onsite, we removed the slewing bearing and checked flatness on both, the top and bottom plates of the crane. After ensuring the readings were within the maker's allowed tolerance, we then proceeded with the installation of the new bearing.



We also performed a structural repair on the bent side plates and renewed the top two luffing wire sheaves. After the workshop repairs were completed, we proceeded with the installation of the crane tower again using a shore crane and the gantry. Our team of specialized mechanics and electricians were in charge of the installation.



On the last phase of this big project, we had to use three shore cranes to install the 27-ton, 33 meters long jib. One 400-ton and one 300-ton crane were used to place the jib in position performing a tandem lift. The third crane (130-ton) was used with a basket for our installation team who were in charge of securing the bolts to attach the jib to the tower following the maker's guidelines and correct tightening using specialized tools. Our team then continued with the installation of the messenger rope to install the hoisting wire using the assistance of the third crane. The same process was repeated for the installation of the luffing wire. Together with the crew's assistance we were able to complete on time and did not interfere with ship's transit schedule nor cargo operations.



TALLERES INDUSTRIALES, S.A.

24/7 SHIP REPAIRS AND MARINE SOLUTIONS

SHINING A LIGHT ON SAFE HULL CLEANING SOLUTIONS



HullWiper's green hull cleaning solutions captures biofouling from ships' hulls to reduce drag, fuel consumption and CO2 emissions. All marine fouling is captured by its onboard filter unit for safe and eco-friendly disposal onshore.

www.talleresindustriales.com
www.hullwiper.co

14
LIFE BELOW WATER

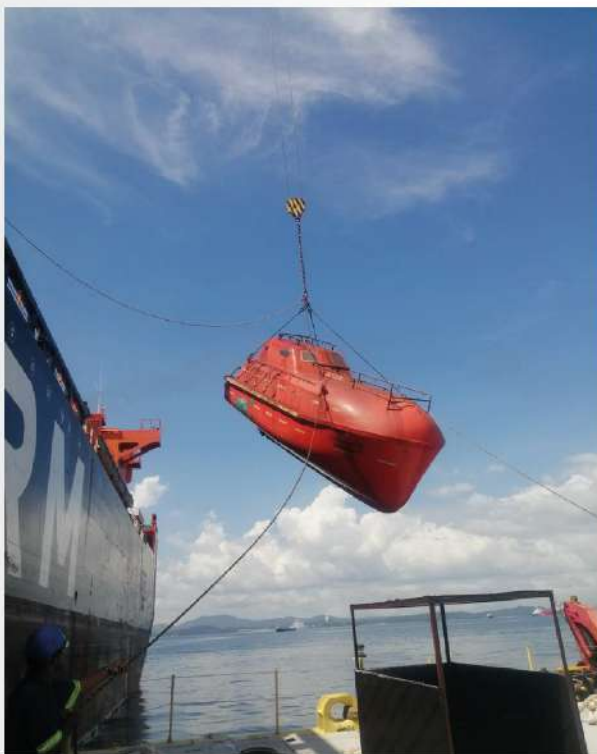




TIT BIG
CHALLENGES

Maneuvering 38 tons Propeller in the Middle of the Ocean
"We don't follow the way; we make our own way."

LIFEBOAT REPAIRS & INSPECTIONS



Established in 2007, TISA LIFEBOAT & LA SERVICES is a subsidiary company of Talleres Industriales created to offer specialized services for lifeboat safety and launching appliances. We perform annual as well as five-year onboard inspections to lifeboat gears 24/7. Furthermore, we are certified to execute repairs to lifeboats, davits, and gears by manufacturers at anchorage or lay berth. Talleres group of companies is your one stop solution provider at the Panama Canal.



RENTAL OF POWER PACK



TALLERES keeps investing in new class approved portable generators. Earlier this month, the latest machinery arrived at our yard. Two new 1000 kW power packs fully adapted in ISO 20-foot container with 80 reefer sockets embedded, ready for reefer connections to power up reefer compressors on container vessels.

Talleres is equipped to respond rapidly to any offshore emergency. We have a wide range of Power Packs and ISO Tank Containers which are always on standby to assist. Our powerpacks range from 130kW to 1,000kW. Our stock also includes four Power Packs with reefer sockets embedded for quick connections. At Talleres Industriales, we understand that being adrift with no power is not a joke and it could be a high-risk situation for our clients, for that reason, we also provide crane barges, supply boats, electrical cables to assist in any side of the Panama Canal.



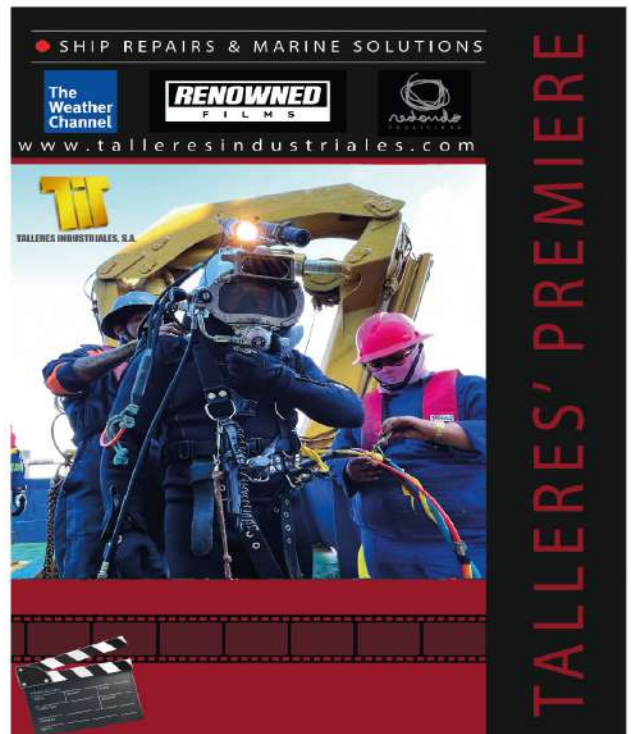


TALLERES PREMIERE! OUTSTANDING PEOPLE



Last month we had the opportunity to invite a group of our many loyal clients and stakeholders to the Panama Canal latest in technology cinema to present some of our work that has been filmed by Renowed Films from UK and Redondo Films from Panama.

Here in Talleres, we are always trying to turn our jobs into a good story to tell through short films and documentaries of our different missions and challenges.



We cannot afford not to make good professional evidence of our efforts and amazing achievements. During our Premiere, we showed the industry, 4 different documentaries of amazing jobs performed at the Panama Canal and a film by a world prestigious company on behalf of the Weather Channel.



US Ratings for Deep Water Salvage episodes in which Talleres participated registered more than half a million viewers in the UK and more than 100,000 viewers in the United States per episode.



We at Talleres are very fortunate. Our job is our hobby. Waking up early to try to close business with Asia, getting to our daily morning meeting to pump up our teams and finding the strategies and mission for the day.



The only trouble is that it's hard to stop. Talleres routine and daily challenges become a bit of an obsession.



Having a job where every day we must come up with out of the box solutions using the best of our creative mind in short notice, is our daily routine.



As one of our leaders rightfully said, "This is not only a job, it is an adventure"

NEW CNC BRAKE MACHINE



Talleres keeps investing in the latest state-of-the-art technology in order to comply with the needs for the shipping industry worldwide.

We have invested on a machine manufacture on a brand that is always in pursuit of perfection.

Press brake is a machine designed to form folds and bends in sheet metal. The bends are formed to a predetermined angle and are created by clamping the sheet between a combination punch and die.

The punch is then forced down into the die, and the sheet of metal bends accordingly.



Technical Parameters:
 Bending Length (A) mm 40003
 Uprights Distance (B) mm 29004 CNC
 Controller - E30017- Outline Dimension mm
 4050*4500*370018- Weight kg 44000



LOAD TEST



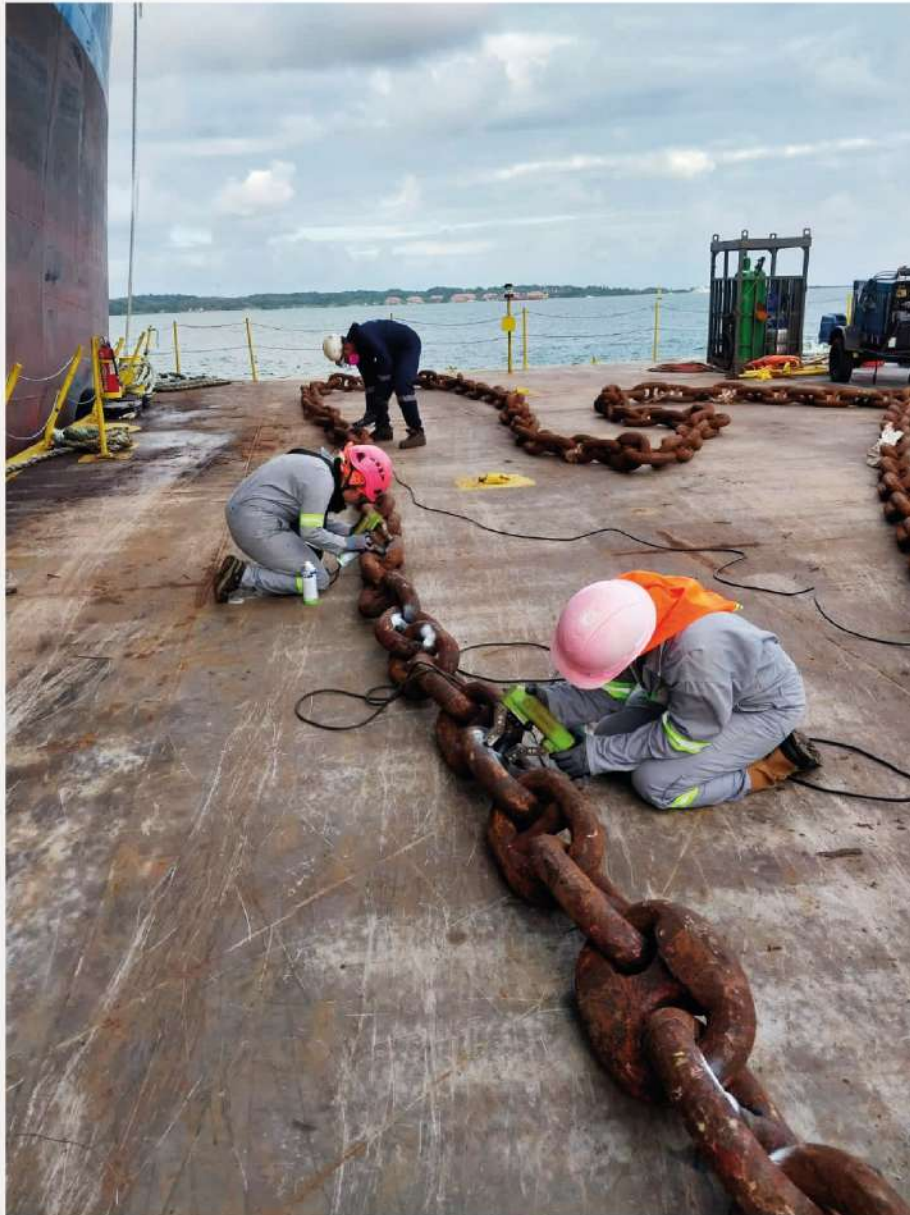
Talleres Industriales can perform:

- All types of cargo gear and crane load tests up to 200 tons.
- All types of load tests for lifeboats, rescue boats, and davits.
- All types of load tests for gangways. All tests can be performed while the vessels are afloat, anchored at Cristobal, Balboa and alongside any berth in the Republic of Panama.

On this occasion we were trusted by Astibal shipyard to come to their premises and assist them on performing a load test of their lifeboat tender davits for one of their client.



ANCHOR CHAIN CLASS APPROVED STUD LINK REPAIRS



We are class approved by ABS and RINA to perform permanent repairs to loosen anchor chain stud's links at any port or anchorage of the Panama Canal. We have all required floating equipment (deck barges and push boats) and certified personnel to perform these requirements in record time, 24/7 at either side of the Panama Canal.



THE RULES ARE EASY TO FOLLOW TAKE CARE OF YOUR LIFE!

The infographic is a yellow rounded rectangle containing six safety icons in a 2x3 grid. Each icon is in a black circle with a white background. Below each icon is a text box with the rule. To the right of the grid is a cartoon illustration of a worker wearing a yellow hard hat, safety goggles, a red life vest, blue overalls, and grey gloves. The worker is smiling and making an 'OK' hand gesture. The hard hat and life vest both feature a logo with a green cross and the text 'SAFETY - FIRST' and 'TALLERES INDUSTRIALES'.

 SAFETY HELMET MUST BE WORN	 SAFETY GOGGLES MUST BE WORN	 SAFETY FOOTWEAR MUST BE WORN
 SAFETY GLOVES MUST BE WORN	 WELDING MASK MUST BE WORN	 HIGH VISIBILITY JACKET MUST BE WORN

"SAFETY COMES FIRST"

MS MAGAZINE



talleresindustriales -shiprepairs



@talleres_industriales



talleres industriales