



JUNE /2022

# TALLERES INDUSTRIALES, S.A.

24/7 SHIP REPAIRS AND MARINE SOLUTIONS

MAGAZINE 21th Edition



## MAIN FEATURES

### 24/7, 365, READY TO ASSIST

Urgent Call for Repairs to a Roro Vessel After Collision

PAGES 4 - 6

### SAFETY – DRILLS, DRILLS, DRILLS

Drill Procedures in our Underwater Operations

PAGE 8

### TURNKEY SOLUTIONS FOR CRANE REPAIRS

In Situ Jib Boom Crane Structural Repairs at Balboa Anchorage

PAGES 12 – 14

## TABLE OF CONTENTS

- 2 Talleres Football Team!
- 3 Editorial – Woman in The Maritime Industry
- 4 Urgent Call for Repairs to a Roro Vessel After Collision
- 7 Hullwiper ROV
- 8 Safety – Drills, Drills, Drills
- 9 Marine Solutions – Rental of Power Packs
- 10 Talleres Welcomes New DSV Mr. Burke to our Fleet
- 11 Marine Solutions – In Situ Windlass Repairs
- 12 Amazing Jobs – In Situ Jib Boom Crane Structural Repairs at Balboa Anchorage
- 15 Next Edition Preview – Coming up on our July 2022 edition
- 16 Talleres – ROV – Hull Cleaning

## TALLERES FOOTBALL TEAM!



In TISA, we understand we should keep a balance between our daily work and daily lives. Talleres has been participating in different sports competitions such as baseball or football, either national or internal ones. On this occasion we were invited to participate in the National Competition presented by the Panama Maritime Chamber.

For two months, every Friday there was game where we could share good moments with other colleagues from the industry and get to know each other more. Also, it enhances the synergy between our workers. Our team involves every type of worker; from managers to helpers but in the pitch, we are all the same, teammates.

Last year we ended up in 3rd place and this year we ended up in 2nd place after a very difficult competition. Let's hope we can win next year's competition!



talleresindustriales -shiprepairs



@talleres\_industriales



www.talleresindustriales.com

## WOMEN IN THE MARITIME INDUSTRY



In this changing world that we live in, women play an important role within the global workforce, and in our industry, we have been pioneers on recruiting professional women who contribute every day with their knowledge, skills, and great attitude to the success of Talleres Industriales. We are proud and honored to have women in our team, who are working in different areas and levels of the organization, leading projects, making decisions, promoting innovation, producing positive changes, controlling strategic assets, and supporting our organizational culture.

For Talleres Industriales, the workforce in the maritime sector does not belong exclusively to men; because as years have come by, we have been able to discover that women ought to be part of an industry that moves fast, that is evolving, and that needs their talent and capacity to respond effectively to the challenges that we face every day. Now, we have professional women working in areas such as: Finance, Marketing, Human Talent, Operations, Commercial, Welding, Logistics, and Warehouse; and all of them are essential because their role makes us a better company. At Talleres Industriales, women and men are equally respected, have equal opportunities and a career path to grow within the company: and all that is supported by our values, which are the foundation of our existence and the key to our success.

We thank very much all women who are part of our company, and we want to let you know that we will continue making the history of Talleres Industriales together with you, to consolidate our leadership in the maritime repair market.

# URGENT CALL FOR REPAIRS TO A RORO VESSEL AFTER COLLISION

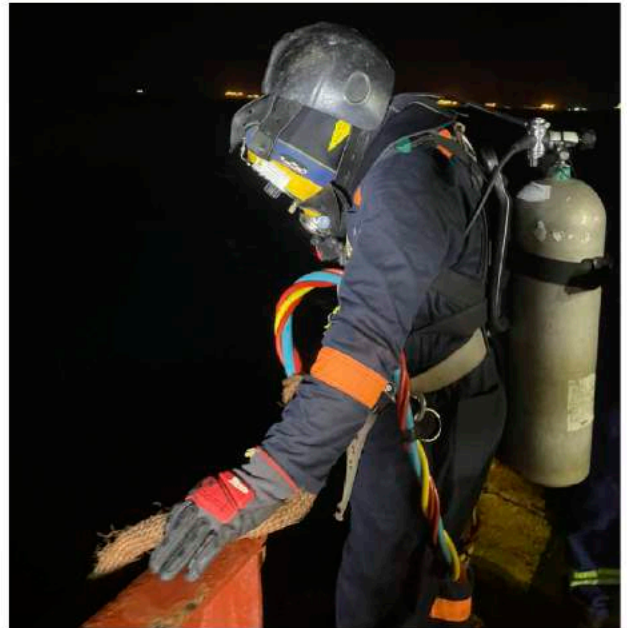
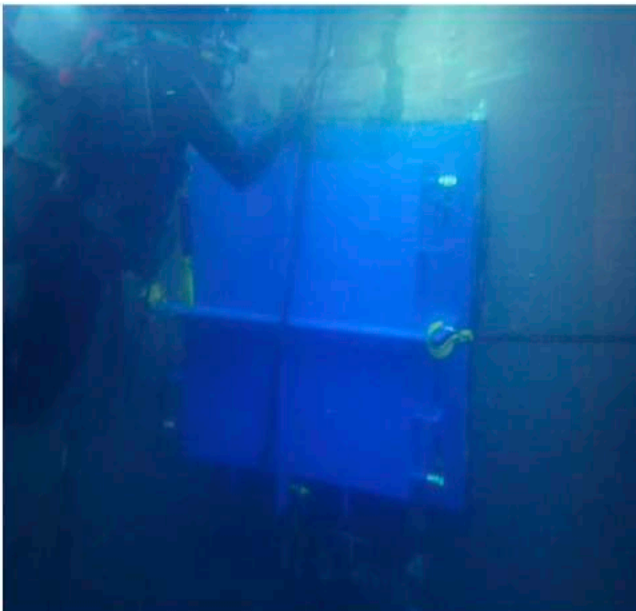


It was three in the afternoon on one of the most sacred Holiday weekends in Panama (Easter weekend) and a desperate call was received by our General Manager from a local agent advising us that one of their vessels had suffered a collision while transiting the Panama Canal and she was taking water and listing to port.

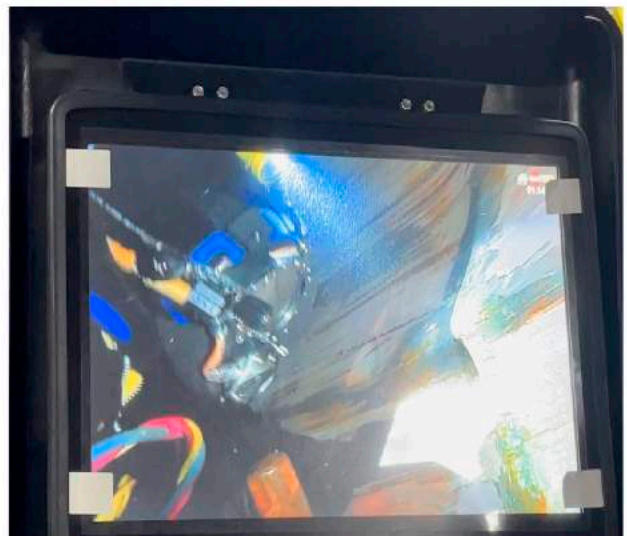
Immediately, our technical department and diving division were advised, and all the key personnel were put in red alert to organize the attendance at soonest. Agent call was followed by Canal Port Captain and Ship Owners communication.

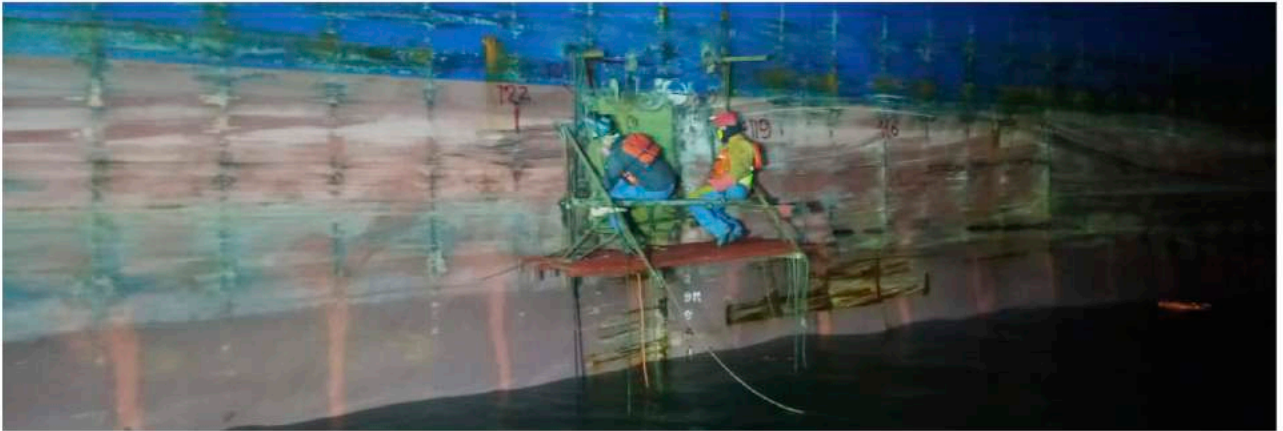


It was a very stressful and critical hours in which impotence and worst-case scenario goes through all stakeholders' minds. Four hours after the first initial call our Technical Manager was onboard inspecting the damage along with Panama Canal Port Captain.



Two hours later our General Manager along the team of divers were onboard and internal inspections were performed. Divers started underwater repairs a few hours after arrival and managed to temporary seal ruptures before sunset to allow for internal detailed inspection and repairs. The next day, a team of engineers, class approved fitters, and welders attended along Class surveyor to develop a temporary repair plan.

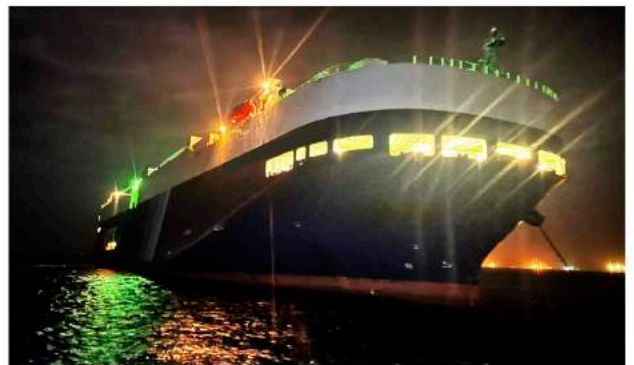
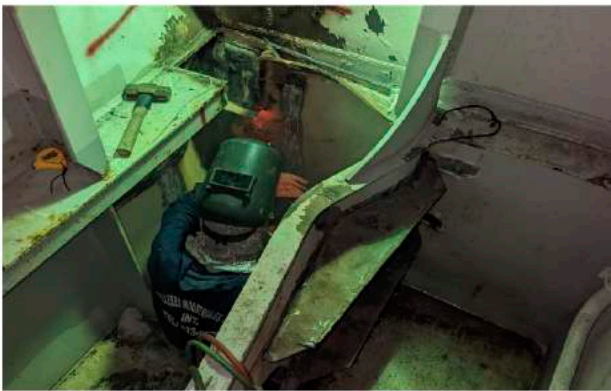




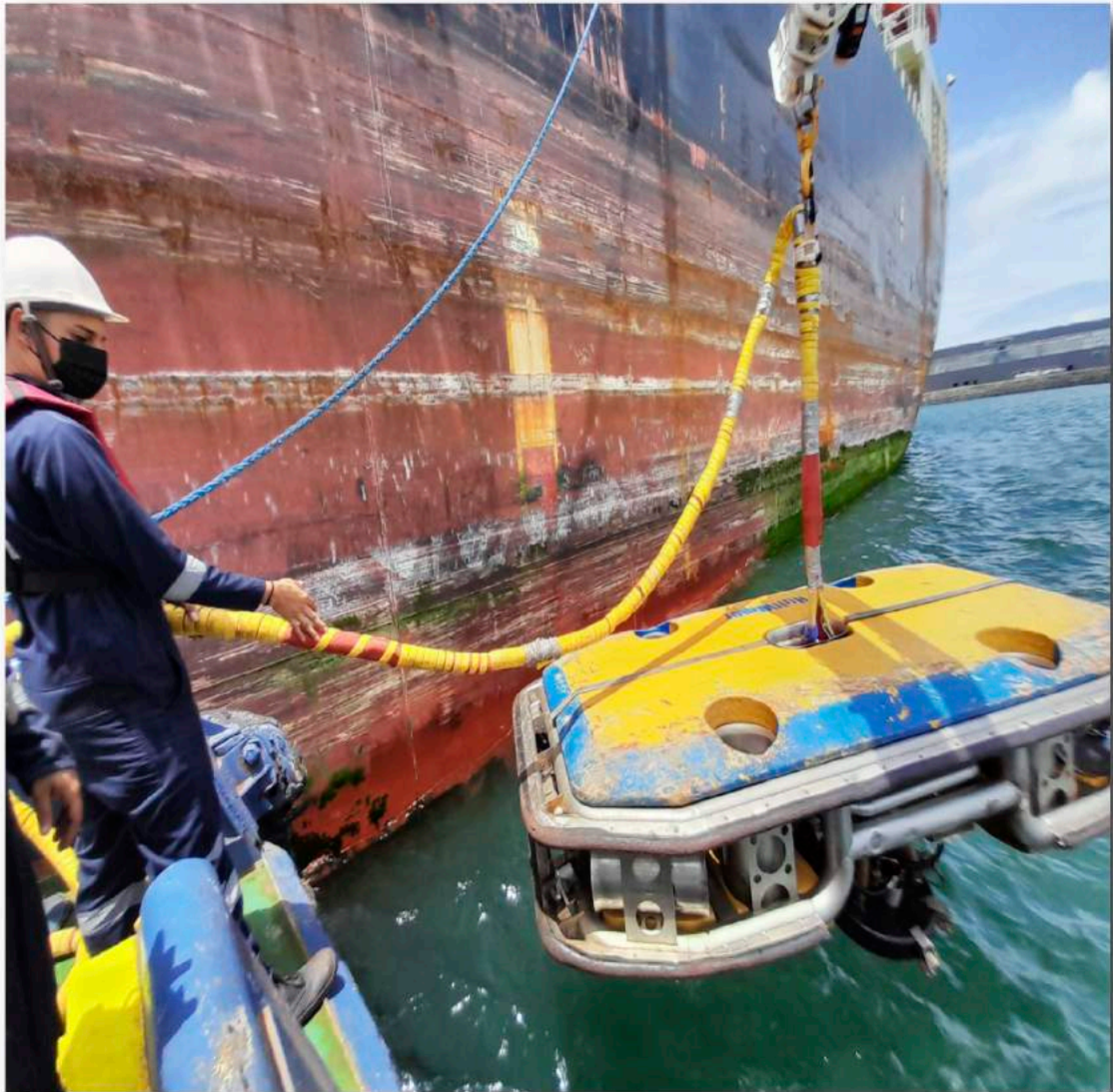
After carefully analyzing all scenarios and structural members, we decided to make internal reinforcements to the affected web frames, arresting cracks on shell, welding of detached longitudinal plus manufacturing and installing concrete boxes where structure had suffered the most. Externally, diving team was advised to make arresting holes and weld a doubler plate below water line.



Above water level, an additional doubler was made against adverse weather conditions which made the process more difficult with hazardous environment for the welders. Job was completed to surveyor, insurance, and class satisfaction within the initial time frame given.



## REVOLUTIONIZING UNDERWATER HULL CLEANING



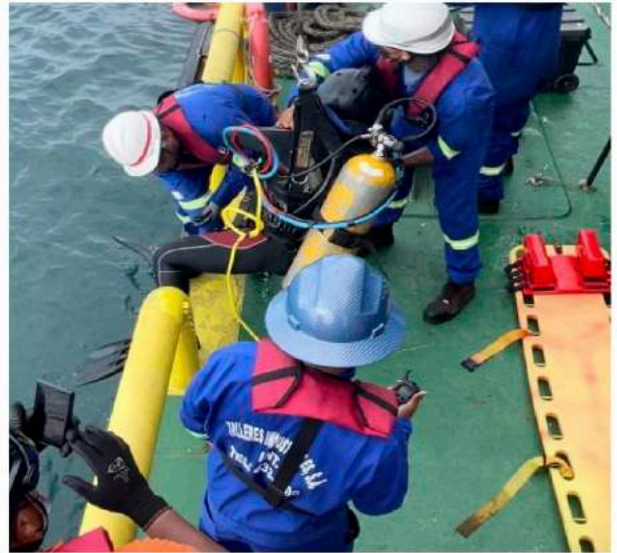
**Diver-Free, Cost-Effective and Environmental-Friendly  
Solution for Underwater Hull Cleaning.**

## COMMERCIAL DIVING OPERATIONS EMERGENCY DRILLS

Emergencies can happen anywhere and at any time and the emergency drills exercises are hands-on activities that build muscle memory and allow participants to actively engage in learning. Being prepared and planning are critical to protect lives, the environment, and property. The main objectives of these drills are to ensure that everyone knows:

- What are the hazards and risks at the workplace?
- What and how to do in the event of an emergency?
- Preparations

In order to minimize the impact, every person in such a situation must know exactly what to do.



This requires detailed emergency management and repeated exercises or drills. We keep investing to provide a safe environment for all our staff and the best way is to train our people with the possible emergency scenarios to build up their skills related to emergency preparedness and response.





# 2000 MORE KW OF POWER TO SUPPLY YOU!



TISA now counts with 2 new units of Gensets, each 1000kW of power. In addition, these new Gensets count with 80 reefer sockets to "plug-and-play" your reefers.

TISA can offer new solutions for rental power needs; these vary from capacities and sizes to ensure our clients get what they need when they need it.

TISA also counts with technical specialists to deliver, install, and test the Gensets onboard vessels, ports, or local industries.



# TALLERES WELCOMES NEW DSV MR. BURKE TO OUR FLEET



An additional Diving Support Vessel will join Talleres fleet next month. The name of this new vessel "Mr. Burke" was given to honor the career, sacrifice, and legacy of our Balboa Technical Manager and friend Mr. Sergio Burke. With this acquisition, Talleres became the biggest fleet manager in the whole country with more than 20 floating equipment between Diving Support Platforms, STS boats, Supply boats, launches, deck barges, and crane barges.

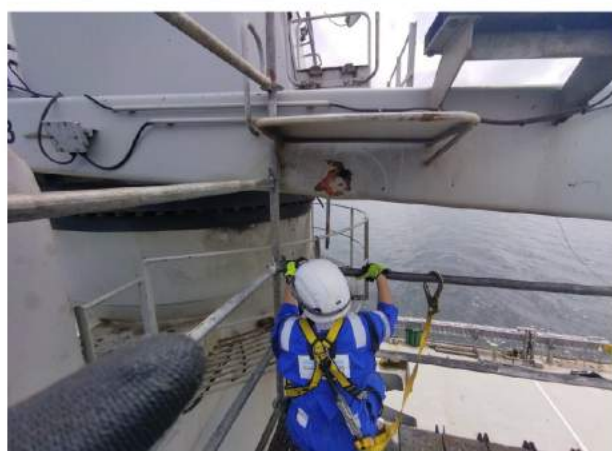


## MARINE SOLUTIONS IN SITU WINDLASS REPAIRS



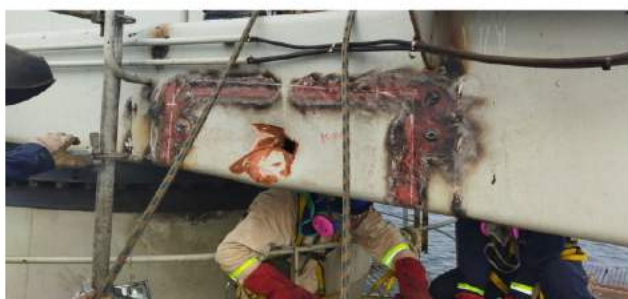
For all types of in situ windlass repairs, Talleres Industriales mechanical division is always ready to attend 24/7. We transfer the workshop to the vessel at anchorage with a great sense of creativity and efficiency. Whenever removal of windlass to workshop is not feasible, we build a steel structure that can handle proper removal of parts to be reconditioned at the workshop or in situ. From welding repairs to precision machinist of parts can be done at either anchorage of the Panama Canal.

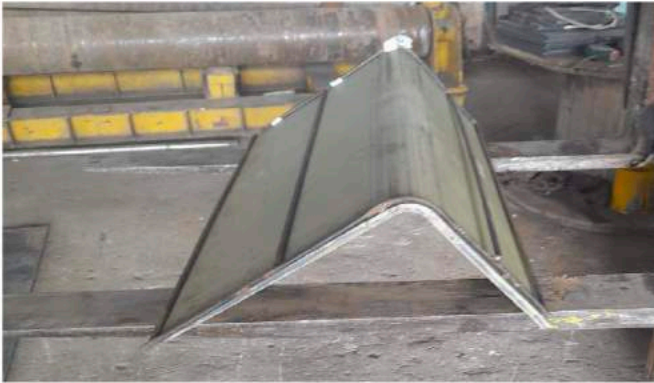
## IN SITU JIB BOOM CRANE STRUCTURAL REPAIRS AT BALBOA ANCHORAGE



In this case a Panamax Bulk Carrier suffered a structural damage on a Central America port and same had to be deviated to Panama for permanent class approved repairs. Crane damage is a critical and expensive problem that requires urgent attention since it has a negative impact on all the stakeholders (owners, charters, cargo).

Other than unforeseen dry dock cost, a vessel owner's worst nightmare can be between having the vessel laid up to paying unexpected extra expenses due to equipment damage.





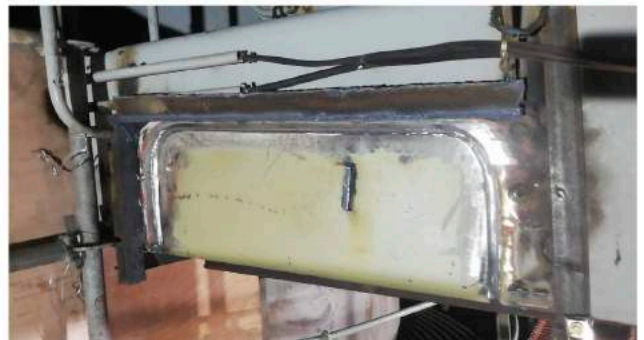
Engineers boarded vessel on arrival along with class surveyor and insurance.

Talleres repair plan was confirmed, and jib boom crane secured and reinforced to guarantee correct alignment.

New section was fabricated in our workshop parallel of the cutting and beveling of the jib.



Once again, Talleres Industriales was put to test to perform in situ repairs at Balboa anchorage in record time to minimize the economic impact. During the repairs we suffered unexpected setbacks due to heavy constant rain, powerful winds, and strong swells, making this job more interesting and challenging. Working at height demands a very strict safety protocol in which Talleres has in its culture as our main priority.





New section was fitted, and class approved production welding was performed. After completion, all NDT tests were performed to the satisfaction of attending surveyors. Finally, load test of crane was done to let the vessel sail to her next port.



## COMING UP ON OUR JULY 2022 EDITION



**INSTALLATION OF 31 MOORING EQUIPMENT PLUS 15 TONS OF UNDERDECK REINFORCEMENT IN RECORD TIME**



**AUXILIARY ENGINE OVERHAUL ALONG WITH STRATEGIC PARTNER GOLTENS**

# TALLERES – ROV – HULL CLEANING



**06**  
CLEAN WATER  
AND SANITATION

**09**  
INDUSTRY, INNOVATION  
AND INFRASTRUCTURE

**14**  
LIFE BELOW  
WATER

**15**  
LIFE ON LAND